

BayCare Health System

October 2010

BEACON



What is BEACON?

BEACON is BayCare's massive 7-year, \$228-million, 3-phase initiative to implement a system-wide Electronic Medical Record (EMR).

- Entire health team sees comprehensive real-time information
- Patients receive superior care at right time and place
- Team members and physicians essential to making these ideas a reality

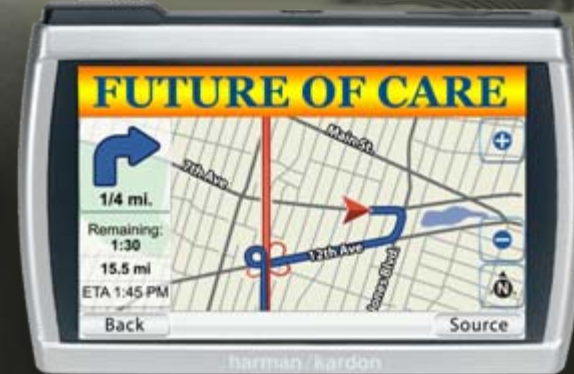


Phase I

Phase III

Meaningful
Use

Phase II

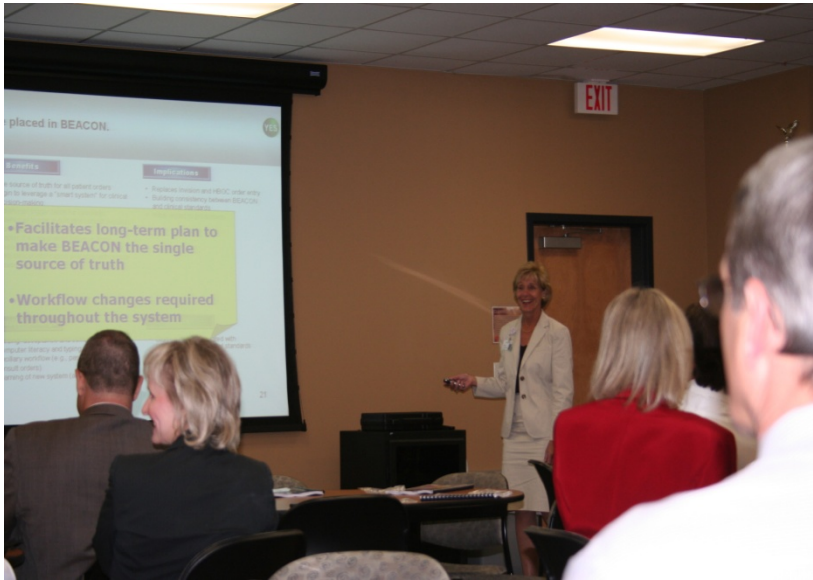


Phase II BEACON Day 1- Decisions Summary

Phase II	
BD1 Decision	Description
1	Computerized Physician Order Entry (CPOE) will be the standard across BayCare.
2	Order Sets will be standardized and required in all BayCare Emergency Departments.
3	Physicians will use the BEACON Inbox (Message Center) to sign all verbal and telephone orders (Inbound Messaging).
4	Physicians will have availability to (but not be required to use) BEACON Messaging / Inbox (Message Center) to communicate with each other (Outbound Messaging).
5	All orders will be placed in BEACON.
6	All medications will be documented in BEACON.
7	All non-physician interdisciplinary clinical documentation will be captured in BEACON, with the exception of OB.

Phase II BEACON Day 1- Decisions Summary

Pat Sizemore, CSC Chair Facilitating Discussion



Executives Voting on Key Decisions



Three Phases of BEACON

Phase I Clinical Foundation

Clinical Viewer

(PowerChart)

HIM/Doc Imaging

Surgery

(SurgiNet)

Pharmacy

(PharmNet)

Alerts – Med Profile

Medication Profile

Medication Reconciliation

Phase II Clinical Enhancement

Patient Care

Orders Management

Nursing Documentation

Ancillary Documentation

eMAR

Critical Care (INet)

ED Expansion

Enterprise FirstNet

PowerNote EDs only

CPOE for EDs only

Phase III Outcomes Enhancement

CPOE

Evidenced-based Alerts

INet MD

PowerNote

Nursing Care Plans

Advanced Laboratory

Laboratory POC

Solutions

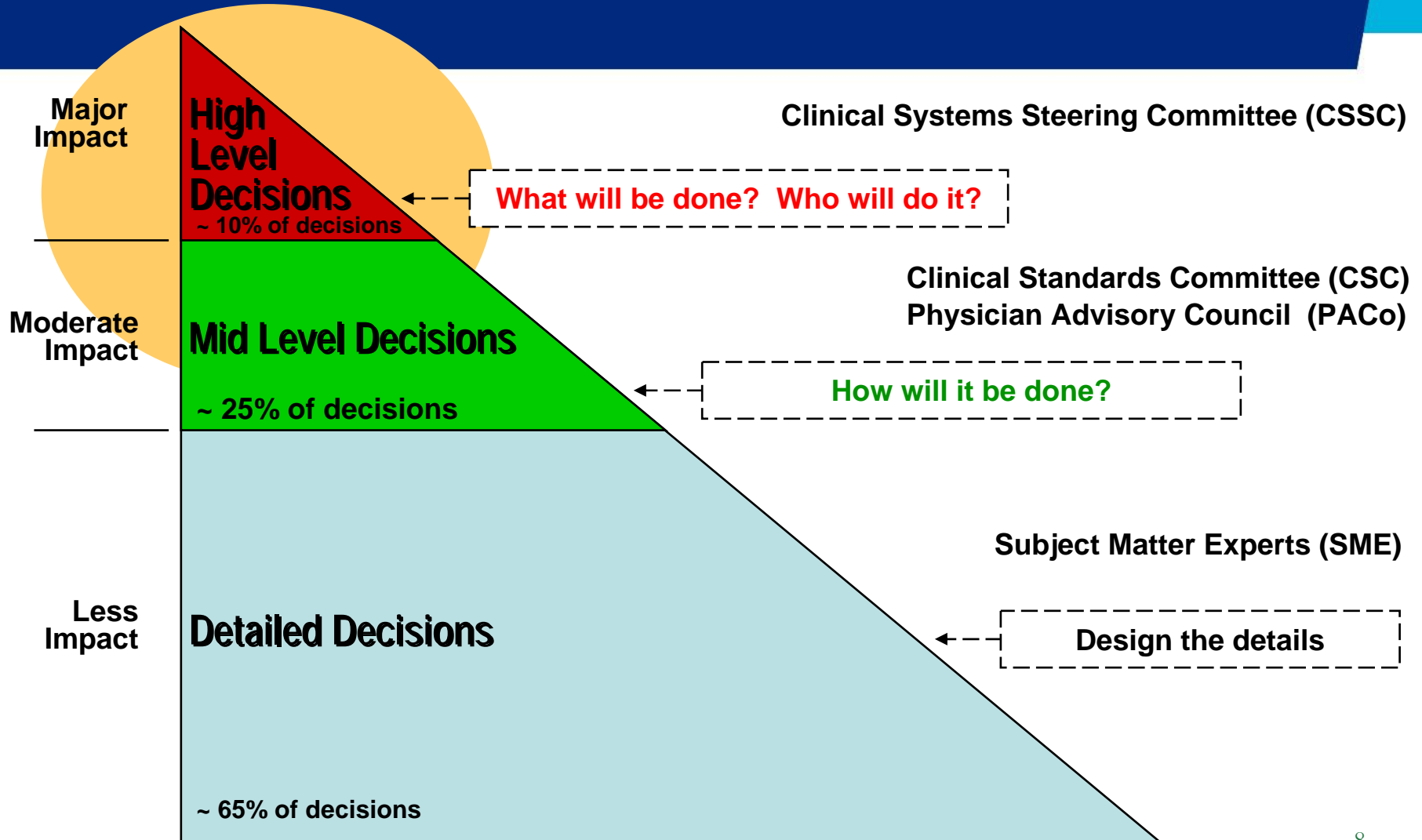
Surgery Expansion

Anesthesia

Key Organizational Programs

“The sum of the parts is greater than the whole”

The Importance Of Decision-Making



Phase I BEACON Day 1- Decisions Summary

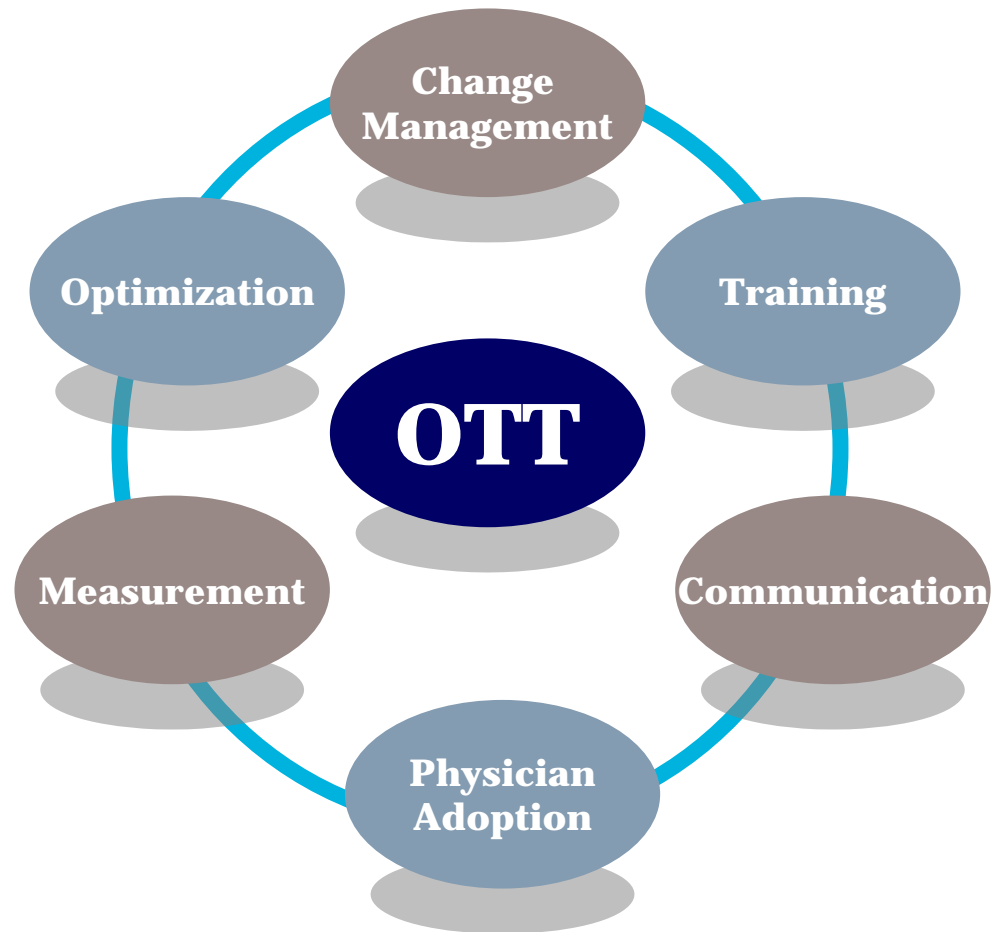
Phase I	
BD1 Decision	Description
1	Remote access for physicians during Phase 1.
2	Standards for clinical documentation
3	Standards for forms
4	Standards for bar-coded patient information
5	When information is available electronically, discontinue paper.
6	Mandate electronic signatures.
7	The electronic record is the legal medical record

Organizational Transformation Team (OTT)



Organizational Transformation Team (OTT)

The organizational Transformation Team (OTT) drives the alignment of BEACON initiatives to support optimal system-wide adoption and attain project goals



Change Journey



The daydreams of cat herders

BayCare Utilizes John Kotter's Change Management (CM) Framework

Change Adoption Curve

PREPARE "Set the Stage & Decide What to Do"

1. Create a Sense of Urgency
2. Pull Together the Guiding Team
3. Develop the Change Vision and Strategy

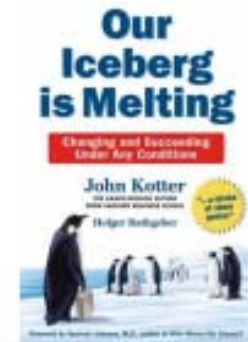
ENGAGE "Make It Happen"

4. Communicate for Buy-In
5. Empower/Enable Others to Act
6. Create Short-Term Wins

SUSTAIN "Make It Stick"

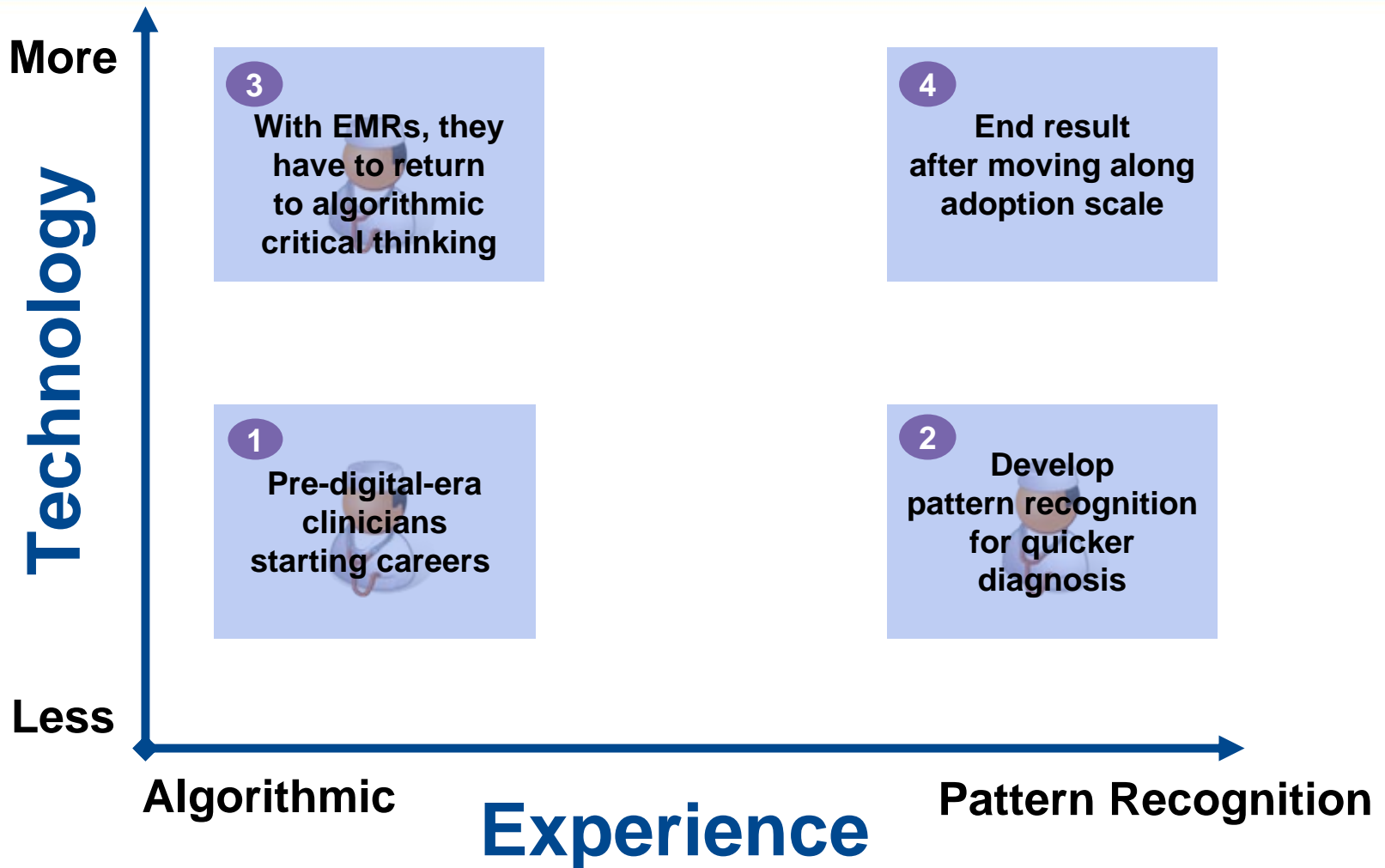
7. Don't Let Up
8. Create a New Culture

Activation



Reference: [Our Iceberg Is Melting](#).
Eight Step Process for Successful Change.
Author, John Kotter, 2006. Page 130-131.

Transition for Pre-digital Era Clinicians



E-latrogenic Risks

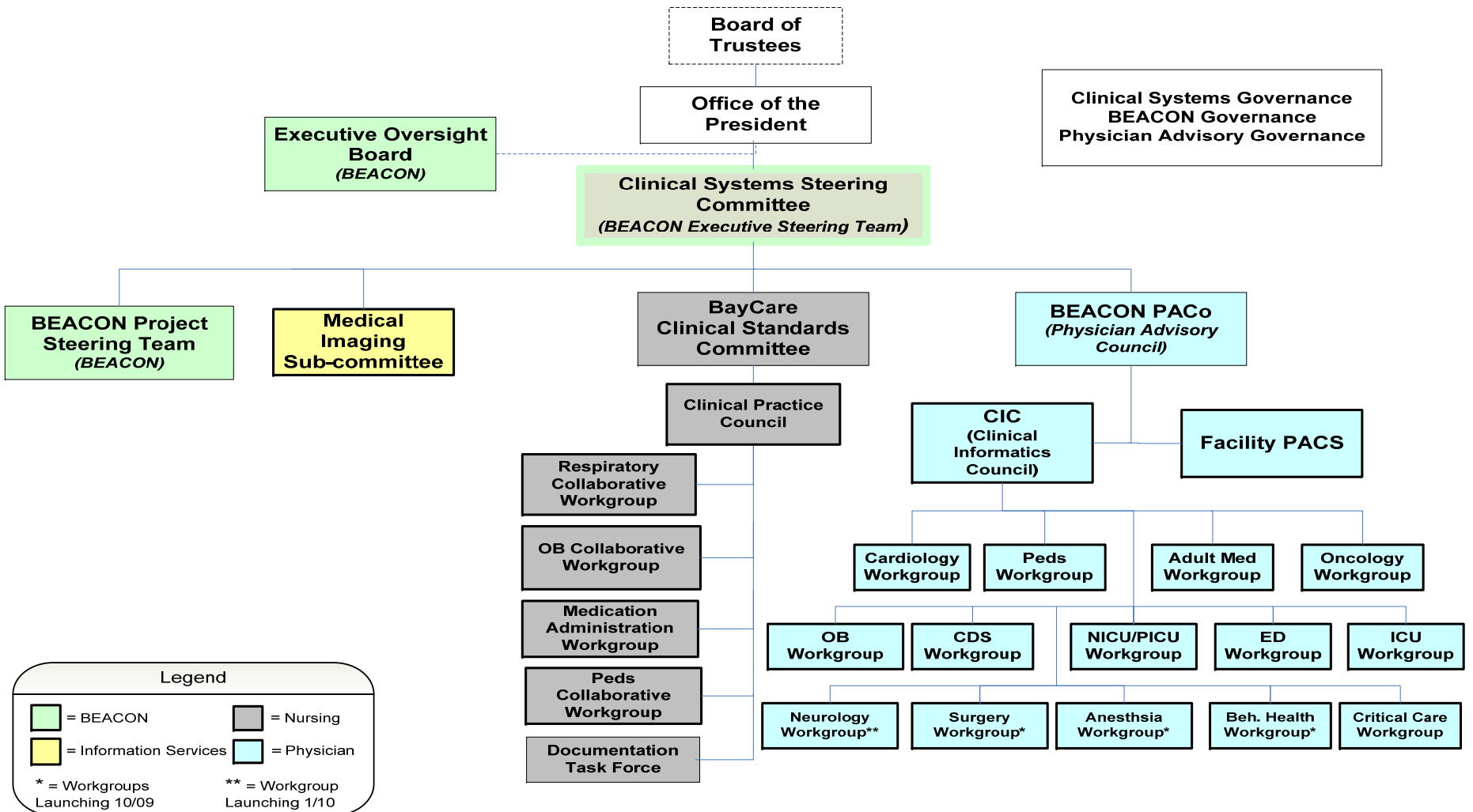
Hospital based EMRs are largely pre-internet era legacy systems

Most are not primarily designed around clinician workflow

Each requires local design, build, testing and implementation disciplines. (each step can contribute to errors)



Project Governance- 10/2010



Clinical Informatics Council

Responsible for approving
content

Prepared for appeals

Multidisciplinary



Decision Support

“Studies show that nearly half of physicians care is not based on best practices.”

The Quality of HealthCare Delivered to Adults in the US: E.A. McGlynn et al, NEJM, 348 No. 26, (2003) 2635-2645

Clinical Decision Support and Knowledge Management

**Pre-decision
Making**

**Instantaneous
with the decision**

**Post-decision
Making**

**Epocrates
Dynamed,
MDConsult
Cerner,
Zynx**

**Cerner rules,
Alerts,
Theradoc
Others**

**Power
Insight,
TSI,
Premier,
Others**

Information Management

**Enablers, Reminders,
Evidenced Based
Tools**

Alerts & Notices

**Data analysis, Data
Reporting Tools**